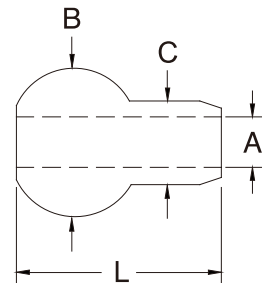


# SINGLE SHANK BALL SWAGE

S.S. T316  
MACHINED



ITEM	A (CABLE)	B	C	L	WT (lb)	AFTER SWAGE
9101S-01	3/64"	0.208"	0.129"	0.262"	0.018	0.187"
9101S-02	1/16"	0.212"	0.132"	0.268"	0.019	0.190"
9101S-03	3/32"	0.282"	0.168"	0.384"	0.050	0.253"
9101S-04	1/8"	0.350"	0.223"	0.500"	0.075	0.315"
9101S-05	5/32"	0.424"	0.259"	0.616"	0.010	0.379"
9101S-06	3/16"	0.492"	0.298"	0.730"	0.015	0.442"
9101S-07	7/32"	0.560"	0.352"	0.846"	0.025	0.505"
9101S-08	1/4"	0.629"	0.406"	0.962"	0.030	0.567"
9101S-09	9/32"	0.699"	0.444"	1.078"	0.050	0.632"
9101S-10	5/16"	0.768"	0.480"	1.193"	0.066	0.694"
9101S-12	3/8"	0.900"	0.552"	1.415"	0.087	0.810"