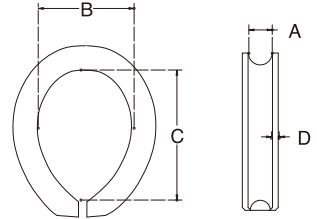


# HEAVY DUTY THIMBLE

S.S. T304  
PRECISION CAST



ITEM	A(WIRE)	B	C	D	WT (lb)
2343S-06	1/4"	5/8"	1"	0.06"	0.06
2343S-08	5/16"	7/8"	1-3/8"	0.07"	0.09
2343S-10	3/8"	1-1/8"	1-5/8"	0.08"	0.16
2343S-13	1/2"	1-3/8"	2"	0.09"	0.25
2343S-16	5/8"	1-3/4"	2-7/16"	0.13"	0.66
2343S-20	3/4"	2-5/32"	3-5/16"	0.14"	1.25
2343S-25	1"	2-3/4"	4"	0.15"	2.25