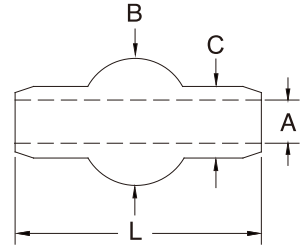


DOUBLE SHANK BALL SWAGE

S.S. T316
MACHINED



ITEM	A (CABLE)	B	C	L	WT (lb)	AFTER SWAGE
9102S-02	1/16"	0.207"	0.127"	0.362"	0.0016	0.190"
9102S-03	3/32"	0.277"	0.163"	0.525"	0.0032	0.253"
9102S-04	1/8"	0.345"	0.218"	0.688"	0.0094	0.315"
9102S-05	5/32"	0.419"	0.254"	0.850"	0.0125	0.379"
9102S-06	3/16"	0.487"	0.293"	1.012"	0.025	0.442"
9102S-07	7/32"	0.555"	0.347"	1.175"	0.032	0.505"
9102S-08	1/4"	0.624"	0.401"	1.337"	0.040	0.567"
9102S-09	9/32"	0.694"	0.439"	1.497"	0.042	0.632"
9102S-10	5/16"	0.763"	0.475"	1.664"	0.043	0.694"