

SS-4055
Latch Kits



LATCH ORDERING INSTRUCTIONS

Specify latch kit stock number.

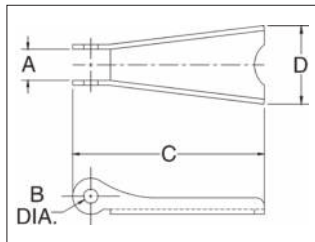
Specify capacity of hook to which latch will be assembled.

Specify hook material (carbon or alloy).

- Stainless steel construction with cadmium plated steel nuts.
- Shipped packaged and unassembled.
- Instructions included for easy field assembly.

APPLICATION AND WARNING INFORMATION
SECTION 17

SS-4055 LATCH KITS



| Hook Size (t) | | | Hook ID Code | Stock No. | Weight Each (lb) | Dimensions (in) | | | |
|---------------|---------|-----------|--------------|-----------|------------------|-----------------|-----|------|------|
| Carbon | Alloy | Bronze | | | | A | B | C | D |
| 3/4 | 1 | .5 | D | 1090027 | .02 | .38 | .16 | 1.44 | .59 |
| 1 | 1-1/2 | .6 | F | 1090045 | .02 | .38 | .16 | 1.60 | .59 |
| 1-1/2 - 2 | 2 - 3 | 1.0 - 1.4 | G / H | 1090063 | .03 | .47 | .19 | 1.84 | .82 |
| 3 | 4-1/2 | 2.0 | I | 1090081 | .06 | .56 | .17 | 2.41 | 1.00 |
| 5 | 7 | 3.5 | J | 1090107 | .11 | .58 | .20 | 2.97 | 1.21 |
| 7-1/2 - 10 | 11 - 15 | 5.0 - 6.5 | K / L | 1090125 | .17 | .59 | .27 | 3.66 | 1.50 |
| 15 | 22 | 10.0 | N | 1090143 | .39 | .83 | .39 | 4.94 | 1.90 |
| 20 | 30 | - | O | 1090161 | .63 | .94 | .52 | 5.88 | 2.56 |
| 25 - 30 | 37 - 45 | - | P / S | 1090189 | 1.12 | 2.19 | .39 | 6.50 | 3.84 |
| 40 | 60 | - | T | 1090205 | 1.77 | 3.31 | .52 | 7.88 | 4.12 |