

⚠ PLEASE READ - IMPORTANT SAFETY INFORMATION

Please read and understand the manufacturer's instructions for each component or part of the complete system. Manufacturer's instructions must be followed for proper use, care, and maintenance of this product. These instructions must be retained and be kept available for the worker's reference at all times. Alterations or misuse of this product or failure to follow instructions, may result in serious injury or death.

⚠ WARNINGS AND LIMITATIONS

- Never use the FallTech For Tools™ components for personal fall arrest, restraint, or work positioning.
- Inspect the FallTech For Tools™ components before each use in accordance with the requirements in Section 6 below.
- Never modify or alter the FallTech For Tools™ components. This includes extending the length or tying knots in the tool tethers.
- Never attach any tool or equipment to yourself that weighs more than 5 lbs (2.3 kg).
- Never use this products to tether a knife, sharp blade, or other sharp tool.
- Immediately inspect the FallTech For Tools™ components for damage if the tool has experienced a drop.
- Do not use this product on tools or equipment that exceed the rated capacity of the lowest rated component in the FallTech For Tools™ system.
- Do not use this product if it will interfere with any personal fall protection equipment or the operation of the connected tools or equipment.
- Avoid using around moving machinery, thermal, electrical and/or chemical hazards as contact may cause serious injury or death.
- Ensure there is adequate tool drop clearance. The tool fall/swing path must not endanger you or any other workers.
- All procedures shown in these instructions are for FallTech For Tools™ products only.
- Report all incidents of dropped tools to your supervisor or safety coordinator.
- Do not use this product in temperatures below -31 degrees F (-35 degrees C) or above 113 degrees F (45 degrees C)

1.0 Description - The FallTech For Tools™ Adhesive Tool Attachment is used to attach the FallTech For Tools™ Choke-On Wire Loop, for use with FallTech® Wrist Attachments and Tool Anchors.

2.0 Application - The FallTech For Tools™ Adhesive Tool Attachment is designed to be used as a component in a dropped object prevention program. The tool tethering system is an assembly of components and subsystems to arrest a tool from an accidental drop. The system typically consists of tool attachment, a tool tether, and a tool anchor. See product labels for maximum load capacity and maximum allowable tether length.

3.0 System Requirements - The FallTech For Tools™ Adhesive Tool Attachment is designed for use by a single accessory or tool with a combined weight no greater than 2lbs (0.9kg) or based on the rating of the Tool Tether. **DO NOT** use the Adhesive Tool Attachment if it interferes with the proper use of the accessory or tool.

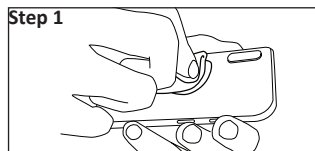
3.1 Compatibility of Components: Equipment is designed for use with approved components and subsystems only. Substitutions or replacements made with non-approved components or subsystems may jeopardize compatibility of equipment and may affect the safety and reliability of the complete system.

3.2 Making Connections: Only use locking connectors with this equipment. Only use connectors that are suitable to each application. Ensure all connections are compatible in size, shape, and strength. Do not use equipment that is not compatible. Visually ensure all connectors are fully closed and locked.

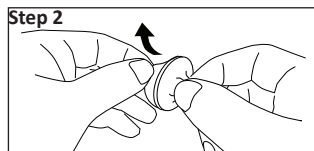
4.0 Installation

4.1 Pre-Use Inspection: Inspect the Adhesive Tool Attachment thoroughly before attaching it to the to the tool for damage or wear. Inspect the adhesive liner to ensure that the adhesive surface has not been exposed before installation.. If any of these conditions exist, remove from service.

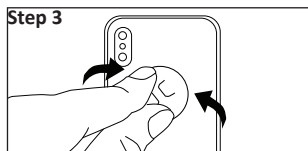
4.2 Installation Procedure: Ensure the accessory or tool and Adhesive Tool Attachment is clean and free of oil, grease, or debris, which could prevent adequate bonding of the tape onto the tool. The Adhesive Tool Attachment should be placed away from the functional parts of the tool. See the figures below for the installation steps.



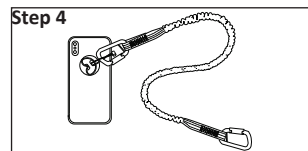
Step 1
Thoroughly clean and dry the mating surface before installation. Avoid any contact with the surface being used for the adhesive.



Step 2
Remove the release liner and place the Adhesive Tool Attachment onto the cleaned surface.



Step 3
Apply pressure to the Adhesive Tool Attachment over the bonding area.



Step 4
Attach the Choke-On Wire Loop part number 5317A10 or 5317A25 and your choice of tool tether.

5.0 Maintenance, Service, and Storage


5.1 Maintenance: No scheduled maintenance is required, other than the replacement of items that fail inspection.

5.2 Service: There are no specific service requirements for this system component.

5.3 Storage: Store in a clean, dry, chemical-free environment out of direct sunlight. Avoid prolonged exposure to extreme heat conditions.

6.0 Inspection - Inspect the FallTech For Adhesive Tool Attachment for damage and wear. If any abnormalities are found, remove from service.

6.1 Tape Shelf Life: 1 year from the date of manufacture

FallTech For Tools™ Adhesive Tool Attachment Specifications			
Model #	Description	Capacity and Standards	Adhesive Tool Attachment Image
5402A10	Tool Attachment, 2 lbs, Adhesive Tool Attachment, 10/pk	Up to 2 lbs. (0.9 kg)	

This manual is intended to meet the Manufacturer's Instructions as required by the American National Standards Institute (ANSI), International Safety Equipment Association (ISEA) and should be used as part of an employee training program as required by the Occupational Safety and Health Administration (OSHA).