



FALLTECH[®]

DROPPED OBJECT PREVENTION

FT FOR TOOLS

DROPPED OBJECT PREVENTION

FT for Tools™ enables you to prevent dropped object related injuries. It is a complete system that offers multiple component options to create a dropped object prevention solution to fit your tools and your work applications while enabling you to work efficiently and safely.

Tool Attachments / Tape Measure

Tape Measure Holder attachment fits most large sized tape measures. Provides belt clip for convenience and D-ring for secure attachment. Also has belt loop for dual function as holster when no drop hazards exist.



Item #	Tape Measure Attachments	Pack Qty.	Max Tool Wt.
5400A1	Tape Measure Holder	1	2 lbs.



Tool Attachments / Battery Boot

Battery Boot attachment fits most cordless power tool batteries, including low profile and high capacity designs. Provides D-ring for secure attachment.



Item #	Battery Boot Attachments	Pack Qty.	Max Tool Wt.
5401A1	Battery Boot	1	6 lbs.

Tool Attachments / Adhesive

Adhesive Tool Attachment uses industrial grade adhesive pad to secure tools. For use with choke-on wire loop tool attachments.



Item #	Adhesive Attachments	Pack Qty.	Max Tool Wt.
5402A10	Adhesive Tool Attachment	10	2 lbs.

DROPPED OBJECT PREVENTION

FT for Tools™ enables you to prevent dropped object related injuries. It is a complete system that offers multiple component options to create a dropped object prevention solution to fit your tools and your work applications while enabling you to work efficiently and safely.

Tool Attachments Cold Shrink

Cold Shrink tool attachments require no heat or additional tools to apply. For use with choke-on tool attachments.



Item #	Adhesive Attachments	Pack Qty.	Max Tool Wt.
5410A5	Cold Shrink, Small	5	5 lbs.
5411A5	Cold Shrink, Medium	5	10 lbs.
5412A5	Cold Shrink, Large	5	15 lbs.

Tool Attachments Shackle

Shackle tool attachments are designed for tools with existing captive eye connection points. Attach directly with tool tethers or use additional tool attachments.



Item #	Adhesive Attachments	Pack Qty.	Max Tool Wt.
5420A2	Shackle, 0.4" x 0.75"	2	15 lbs.
5421A2	Shackle, 0.5" x 1.0"	2	15 lbs.
5422A2	Shackle, 0.65" x 1.25"	2	15 lbs.
5423A2	Shackle, 0.8" x 1.5"	2	15 lbs.

DROPPED OBJECT PREVENTION

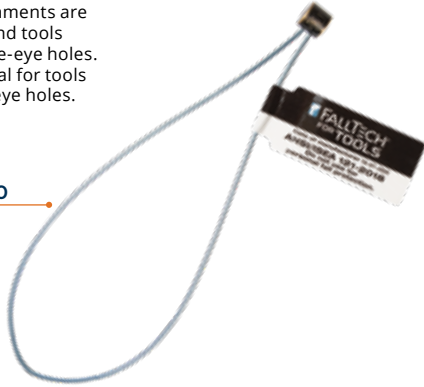
FT for Tools™ are designed to help you hold on to your gear and prevent drop injuries to workers at lower levels. Utilized as a tool tethering system of compatible components, a typical assembly may contain a tool attachment, a tool tether, and in some cases a tool anchor. FT for Tools™ provides multiple component options in each of these product groups so you can create tethering solutions to fit your tools and your work applications.

Tool Attachments

Choke-on

Choke-on Loop attachments are for connections to hand tools having integral captive-eye holes. Wire rope options ideal for tools with smaller captive-eye holes.

5317A10



Item #	Choke-on Loop Attachments	Pack Qty.	Max Tool Wt.
5317A10	5½" Choke-on Wire Loop	10	2 lbs.
5317A25	5½" Choke-on Wire Loop	25	2 lbs.

Tool Attachments

Swage-lock

Swage-lock Loop attachments are for connections to hand tools having integral captive-eye holes. Wire rope options ideal for tools with smaller captive-eye holes.

5314A10



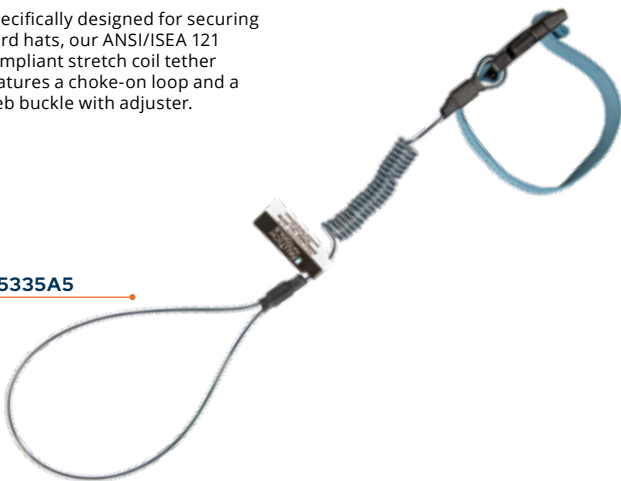
Item #	Swage-lock Attachments	Pack Qty.	Max Tool Wt.
5314A10	2" Swage-lock Wire Loop	10	3 lbs.
5314A25	2" Swage-lock Wire Loop	25	3 lbs.

Hard Hat Tethers

Stretch-coil with Web

Specifically designed for securing hard hats, our ANSI/ISEA 121 compliant stretch coil tether features a choke-on loop and a web buckle with adjuster.

5335A5



Item #	Hard Hat Tethers	Pack Qty.	Max Wt.
5335A5	ANSI Stretch-coil with Web, Cinch-loop /Web and Adjuster 18"	5	2 lbs.
5335A25	ANSI Stretch-coil with Web, Cinch-loop/Web and Adjuster 18"	25	2 lbs.

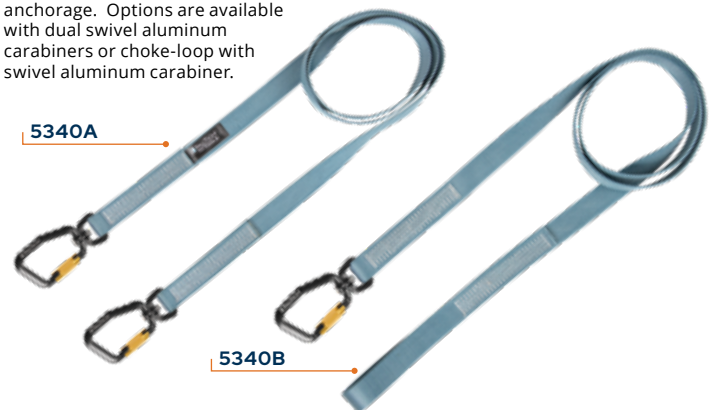
Tool Tethers

Non-Stretch

FallTech® Non-Stretch Web Tool Tethers are designed for securing larger jobsite tools weighing up to 40 lbs. to an appropriately rated anchorage. Options are available with dual swivel aluminum carabiners or choke-loop with swivel aluminum carabiner.

5340A

5340B



Item #	Non-Stretch Tool Tethers	Pack Qty.	Max Tool Wt.
5340A	Non-stretch, Swivel Aluminum Carabiners, 78"	1	40 lbs.
5340B	Non-stretch, Choke-loop with Swivel Aluminum Carabiner, 78"	1	40 lbs.

DROPPED OBJECT PREVENTION

FallTech® Premium Tool Tethers include essential features such as swiveling carabiners to prevent tethers from twisting and binding. They are a critical link for safely connecting users and their tools. Available in preferred configurations and constructed with durable, yet smaller diameter woven elastic web, they suit most applications up to 15 lb. maximum tool weight. Options feature choke-on loops paired with swivel aluminum carabiners. Other choices include dual-swivel carabiner models.

Premium Tool Tethers

Stretch-web



Item #	Stretch-web Premium Tool Tethers	Pack Qty.	Max Tool Wt.
5043A1	Premium Tool Tether with Dual Swivel Aluminum Carabiners, 36"	1	5 lbs.
5065A1	Premium Tool Tether, Choke-on Web-loop with Swivel Aluminum Carabiner, 36"	1	5 lbs.
5044A1	Premium Tool Tether with Dual Swivel Aluminum Carabiners, 36"	1	15 lbs.
5066A1	Premium Tool Tether, Choke-on Web-loop with Swivel Aluminum Carabiner, 36"	1	15 lbs.
5061A1	Premium Tool Tether, Choke-on Cinch-loop with Swivel Aluminum Carabiner, 36"	1	15 lbs.

DROPPED OBJECT PREVENTION

FT for Tools™ helps you work safely and efficiently with your gear and while preventing drop injuries to workers at lower levels. FallTech Premium Tool Tethers include stretch coil, so they remain close to you and avoid snagging. They feature dual swivel aluminum carabiners and accommodate most uses up to 5 lb. maximum tool weight. Stretch-coil tethers measure 10" fully retracted and can expand to 36" in length as needed.

Premium Tool Tethers / Stretch-coil



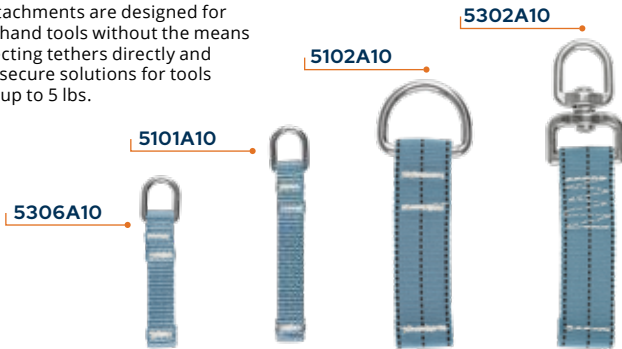
Item #	Stretch-coil Tool Tethers	Pack Qty.	Max Tool Wt.
5215A1	Stretch-coil with Dual Swivel Aluminum Carabiners	1	5 lbs.
5215A5	Stretch-coil with Dual Swivel Aluminum Carabiners	5	5 lbs.
5212A1	Stretch-coil with Dual Swivel Aluminum Carabiners	1	2 lbs.
5212A5	Stretch-coil with Dual Swivel Aluminum Carabiners	5	2 lbs.

DROPPED OBJECT PREVENTION

The FT for Tools™ system enables you to work productively with your tools while preventing drop tool injuries at lower levels. Functioning as a tool tethering system of compatible components, FT for Tools™ includes a tool attachment, a tool tether, and in some cases, a tool anchor. You can create a tethering solution to fit your specific tool and work application.

Tool Attachments / Tape-on

D-ring attachments are designed for common hand tools without the means for connecting tethers directly and to create secure solutions for tools weighing up to 5 lbs.



Item #	Tape-on Attachments	Pack Qty.	Max Tool Wt.
5306A10	D-ring, ½" x 2½"	10	2 lbs.
5101A10	D-ring, ½" x 3½"	10	2 lbs.
5102A10	D-ring, 1" x 3½"	10	5 lbs.
5302A10	Swivel D-ring, 1" x 3½"	10	5 lbs.

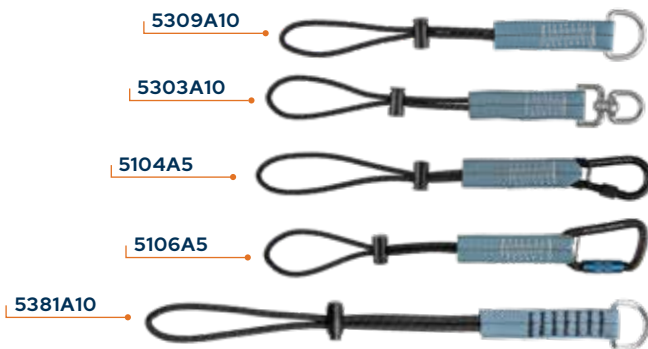
Premium Tool Tape / No-heat

No-heat tool tape is used to secure D-ring attachments to tools up to 5 lbs.; for use with tool tethers and wrist anchors and available in 12' rolls.



Item #	No-heat Tool Tape	Pack Qty.	Max Tool Wt.
5307B1	12' x 1" Premium Tool Tape	1	5 lbs.
5307B10	12' x 1" Premium Tool Tape	10	5 lbs.

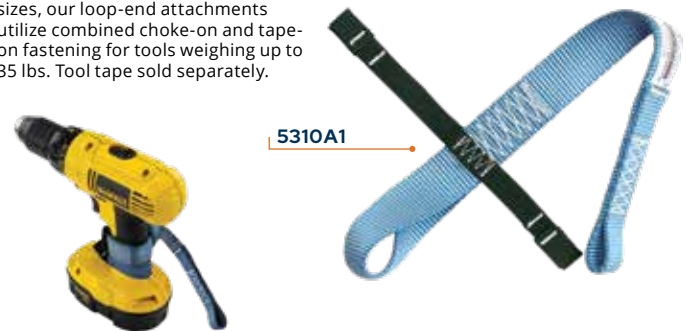
Tool Attachments / Choke-on



Item #	Choke-on Loop Attachments	Pack Qty.	Max Tool Wt.
5309A10	Standard D-ring, 11"	10	5 lbs.
5303A10	Swivel D-ring, 11"	10	5 lbs.
5104A5	Steel Carabiner, 11"	5	5 lbs.
5106A5	Aluminum Carabiner, 11"	5	5 lbs.
5318A10	Standard D-ring, 11"	10	15 lbs.

Tool Attachments / Choke / Tape-on

For larger and heavier hand and power tools with problematic handle sizes, our loop-end attachments utilize combined choke-on and tape-on fastening for tools weighing up to 35 lbs. Tool tape sold separately.



Item #	Choke-on Loop Attachments	Pack Qty.	Max Tool Wt.
5310A1	Loop-end 13" with support arm	1	35 lbs.
5310A5	Loop-end 13" with support arm	5	35 lbs.

DROPPED OBJECT PREVENTION

FT for Tools™ will help you work safely and efficiently with your gear and while preventing drop injuries to workers at lower levels. A typical assembly may contain a tool attachment, a tool tether, and, in some cases, a tool anchor. You can create tethering solutions to fit your specific tool and work application.

Hard Hat Tethers

Stretch Coil / Stretch Web

Specifically designed for securing hard hats, two user-preferred options are available to protect against the drop. Our stretch coil tether features a choke-on loop and snap-clip combination and the stretch web version includes an adjuster paired with a snap-buckle.

5329A5



5330A5

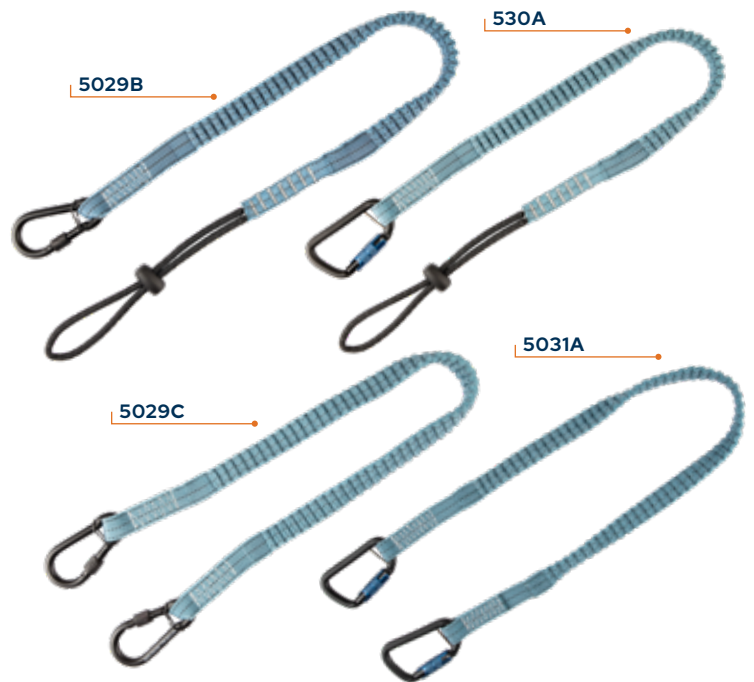
Item #	Hard Hat Tethers	Pack Qty.	Max Tool Wt.
5329A5	Stretch coil 18" Cinch-loop/Snap-clip	5	2 lbs.
5329A25	Stretch coil 18" Cinch-loop/Snap-clip	25	2 lbs.
5330A5	Stretch Web 25" Adjuster/Snap-buckle	5	2 lbs.
5330A25	Stretch Web 25" Adjuster/Snap-buckle	25	2 lbs.

Tool Tethers

Stretch Web

FallTech® Tool Tethers are the critical link for safely connecting users and their tools and are available in preferred configurations to suit most applications up to 15 lb. max. tool weight. All are constructed with woven elastic web and feature either choke-on loops paired with steel screwgate or aluminum twist-lock carabiner options or for added functionality, tethers are also available in dual-carabiner models.

Item #	Stretch-web Tool Tethers	Pack Qty.	Max Tool Wt.
5029B	Choke-on Loop, Steel Carabiner	1	15 lbs.
5029B10	Choke-on Loop, Steel Carabiner	10	15 lbs.
5030A	Choke-on Loop, Aluminum Carabiner	1	15 lbs.
5030A10	Choke-on Loop, Aluminum Carabiner	10	15 lbs.
5029C	Dual Steel Carabiners	1	15 lbs.
5031A	Dual Aluminum Carabiners	1	15 lbs.



Specifications and Standards

Component	Type	Total Capacity	Standards
Tool Tape	All	up to 5 lbs.	ANSI/ISEA 121-2018
Tool Attachments	Tape-on, Choke-on	up to 2 lbs. up to 5 lbs.	
	Loop-end	up to 35 lbs.	
Wrist	Anchor	up to 5 lbs.	

Component	Type	Total Capacity	Standards
Tool Tethers	Hard Hat	2 lbs.	ANSI/ISEA 121-2018
	Speed-clip	up to 5 lbs.	
	Choke-on	up to 15 lbs.	
	Dual Carabiner	up to 15 lbs.	

Component	Type
Webbing	Polyester
Carabiners	Steel and Aluminum

Warnings: The maximum permissible free fall in a tool tethering system is 8 ft. Never tether any tool or equipment to yourself weighing more than 5 lbs. Max.

DROPPED OBJECT PREVENTION

The FallTech® Speed-clip system provides quick tool changes when working at heights while protecting those below you from the hazard of dropped objects. It features multiple compatible components, including tool attachments, wrist attachment anchors, and tool tethers for creating custom solutions for tools weighing up to 5 lbs.

Speed-clip Attachments / Choke-on / Carabiner

Speed-clip attachments are available with choke-on loops, steel screwgate and aluminum twist-lock carabiners for connection to tools with captive-eye holes. All are 11" in length and may be combined with our Speed-clip tethers or wrist attachment anchor.

5027F

5105A5

5107A5



Item #	Speed-Clip Attachments	Pack Qty.	Max Tool Wt.
5027F	Choke-on Loop, 1" x 11"	3	5 lbs.
5027F15	Choke-on Loop, 1" x 11"	15	5 lbs.
5105A5	Steel Carabiner, 1" x 11"	5	5 lbs.
5107A5	Aluminum Carabiner, 1" x 11"	5	5 lbs.

Wrist Attachment Anchor / Speed-clip / D-ring

For interchangeable solutions commonly needed in close proximity work, our Wrist Attachment Anchor features a speed-clip receiver and a steel D-ring to provide multi-function adjustable attachment for speed-clips, carabiners and choke-on loops. Flexible neoprene and elastic with UniFit sizing for tools weighing up to 5 lbs.

5331A1



Item #	Wrist Attachment Anchor	Pack Qty.	Max Tool Wt.
5331A1	Speed-clip and D-ring, UniFit	1	5 lbs.
5331A5	Speed-clip and D-ring, UniFit	5	5 lbs.

Speed-clip Tool Tethers / Choke-on / Carabiner

Our Speed-clip Tool Tethers are designed for versatility as both stand-alone direct-connect tethers and for compatibility within our Speed-clip system in creating solutions to meet your specific needs. Available with elastic choke-on loops and options with steel screwgate and aluminum twist-lock carabiners for tools weighing up to 5 lbs.

5027E

5032A



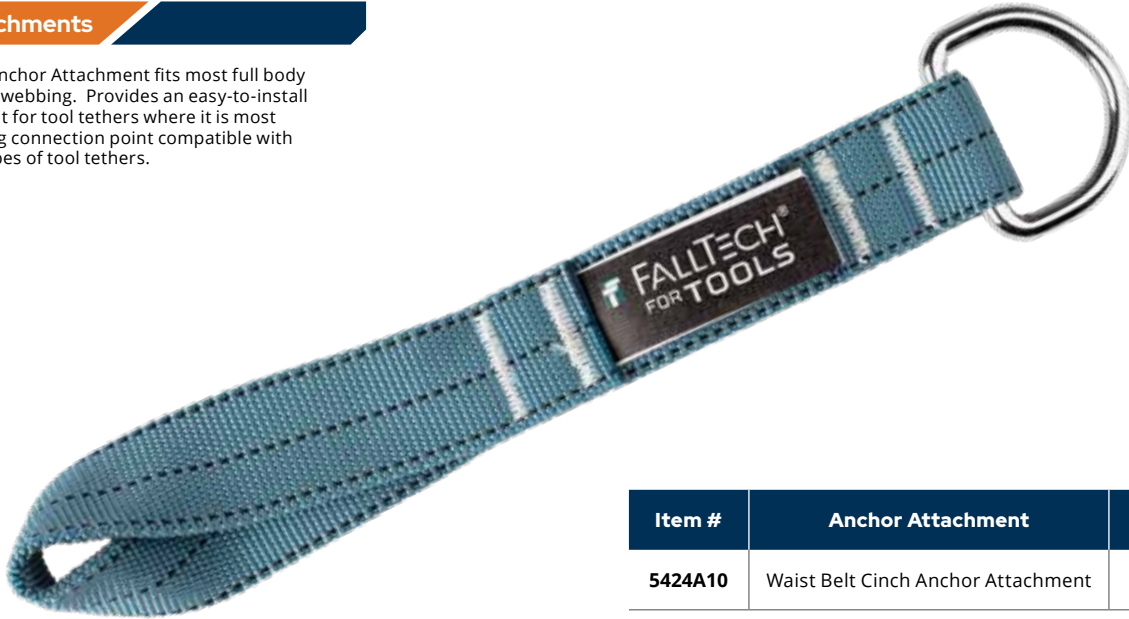
Item #	Choke-on Loop Attachments	Pack Qty.	Max Tool Wt.
5027E	Choke-on loop, Steel Carabiner	1	5 lbs.
5032A	Choke-on loop, Aluminum Carabiner	1	5 lbs.

DROPPED OBJECT PREVENTION

FT for Tools™ enables you to prevent dropped object related injuries. It is a complete system that offers multiple component options to create a dropped object prevention solution to fit your tools and your work applications while enabling you to work efficiently and safely.

Anchor Attachments

Waist Belt Cinch Anchor Attachment fits most full body harness belts and webbing. Provides an easy-to-install anchor attachment for tool tethers where it is most convenient. D-ring connection point compatible with many different types of tool tethers.



Item #	Anchor Attachment	Pack Qty.	Max Tool Wt.
5424A10	Waist Belt Cinch Anchor Attachment	1	5 lbs.

Tool Tethers

Retractables

Compact design with high strength Dyneema rope reduces clutter or snags and increases productivity. Features dual aluminum self-closing, self-locking carabiners for maximum tool security.



Item #	Retractable Tool Tether	Pack Qty.	Max Wt.
5430A1	Retractable Tool Tether, Dyneema Rope with Dual Aluminum Carabiners, 48"	1	2 lbs.

DROPPED OBJECT PREVENTION

FT for Tools™ Kits enables you to prevent dropped object related injuries. It is a complete system that offers multiple component options to create a dropped object prevention solution to fit your tools and your work applications while enabling you to work efficiently and safely.

Tool Tethers

Kits



5601A1

Kit Includes

- 1x 5400A1 Tape Measure Holder Tool Attachment
- 1x 5212A1 Stretch Coil Tool Tether
- For tools weighing up to 2 lb max.



5601B1

Kit Includes:

- 1x 5400A1 Tape Measure Holder Tool Attachment
- 1x 5065A1 Stretch Web Tool Tether
- For tools weighing up to 2 lb max.



5602A1

Kit Includes:

- 1x 5401A1 Battery Boot Tool Attachment
- 1x 5066A1 Stretch Web Tool Tether
- For tools weighing up to 6 lb max.



5603A1

Kit Includes:

- 1x 5400A1 Tape Measure Holder Tool Attachment
- 3x 5027F Speed-clip Tool Attachments
- 1x 5307B1 No-heat Premium Tool Tape; 1" wide x 12' roll
- For tools weighing up to 5 lb max.

Item #	Stretch-web Premium Tool Tethers	Pack Qty.	Max Tool Wt.
5601A1	Tool Tethering Kit, Tape Measure with Stretch Coil Tether	1	2 lbs.
5601B1	Tool Tethering Kit, Tape Measure with Stretch Web Tether	1	2 lbs.
5602A1	Tool Tethering Kit, Power Tool with Stretch Web Tether	1	6 lbs.
5603A1	Tool Tethering Kit, Wristband with Speed Clip Attachments and Tool Tape	1	5 lbs.

DROPPED OBJECT PREVENTION

FT for Tools™ Kits enables you to prevent dropped object related injuries. It is a complete system that offers multiple component options to create a dropped object prevention solution to fit your tools and your work applications while enabling you to work efficiently and safely.

Tool Tethers

Kits



5604A1

Kit Includes:

- 2x 5402A Adhesive Tool Attachments
- 1x 5335A Hard Hat Tether
- For tools weighing up to 2 lb max.



5605A1

Kit Includes:

- 6x 5101A Tape-on Tool Attachments
- 1x 5212A1 Stretch Coil Tool Tether
- 1x 5307B1 No-heat Premium Tool Tape; 1" wide x 12' roll
- For tools weighing up to 2 lb max.



5606A1

Kit Includes:

- 1x 5032A Stretch-web Tool Tether
- 3x 5027F Speed-clip Tool Attachments
- 1x 5307B1 No-heat Premium Tool Tape; 1" wide x 12' roll
- For tools weighing up to 5 lb max.

Item #	Stretch-web Premium Tool Tethers	Pack Qty.	Max Tool Wt.
5604A1	Tool Tethering Kit, Cell Phone Kit	1	2 lbs.
5605A1	Tool Tethering Kit, Stretch Coil with Tape-on Attachments and Tool Tape	1	2 lbs.
5606A1	Tool Tethering Kit, Stretch Web with Speed Clip Attachments and Tool Tape	1	5 lbs.

Discover the full selection of all
our fall protection products at
www.falltech.com



Tel / 323.752.0066

Fax / 323.752.5613

**©2021 Alexander Andrew, Inc
1306 S. Alameda St. Compton,
CA. 90221-4803**

Tools shown not included.

Product description and specifications
herein may change without notice.

U.S. and International Patents Pending.

Part #480-00047

