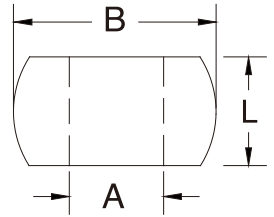


# PLAIN BALL SWAGE

S.S. T316  
MACHINED



ITEM	A (CABLE)	B	L	WT (lb)	AFTER SWAGE
9100S-00	1/32"	0.210"	0.139"	0.002	0.1875"-0.1905"
9100S-01	3/64"	0.210"	0.139"	0.019	0.1875"-0.1905"
9100S-02	1/16"	0.210"	0.139"	0.017	0.1875"-0.1905"
9100S-03	3/32"	0.286"	0.172"	0.004	0.250"-0.253"
9100S-04	1/8"	0.352"	0.186"	0.006	0.312"-0.317"
9100S-05	5/32"	0.428"	0.225"	0.009	0.375"-0.38"
9100S-06	3/16"	0.495"	0.261"	0.010	0.437"-0.442"
9100S-08	1/4"	0.626"	0.335"	0.018	0.562"-0.567"